

DUCK LAKE MEMORIES THE EARLY YEARS



**PRESENTATION TO WHITE LAKE AREA HISTORICAL SOCIETY
DAVID W. PEQUET, PRESIDENT
DUCK LAKE RIPARIAN OWNERS ASSOCIATION
AUGUST 18, 2016
FRUITLAND TOWNSHIP HALL**

DUCK LAKE CHANNEL HAS BEEN PROVIDING “KODAK MOMENTS” FOR OVER 80 YEARS



1932



1934



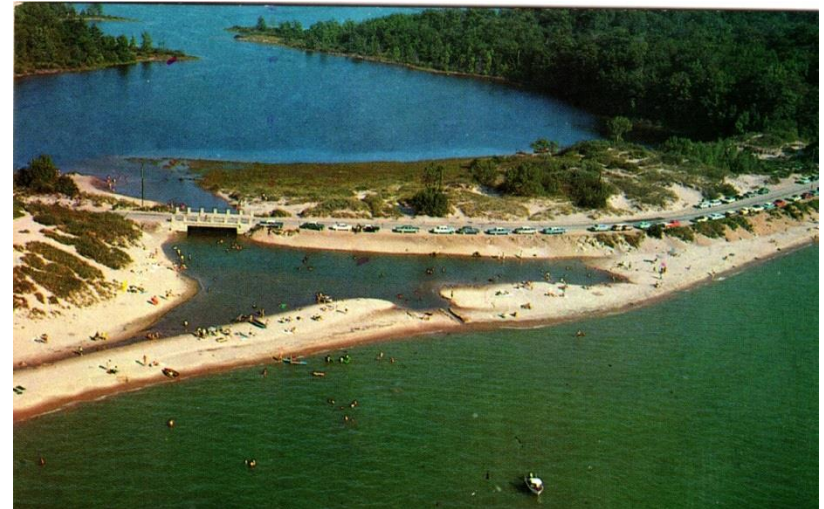
1950



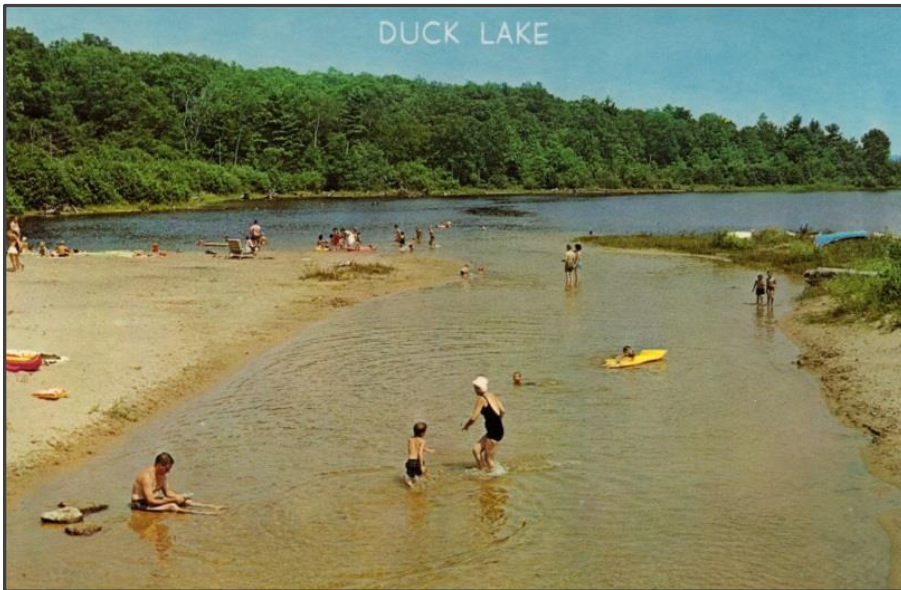
1953



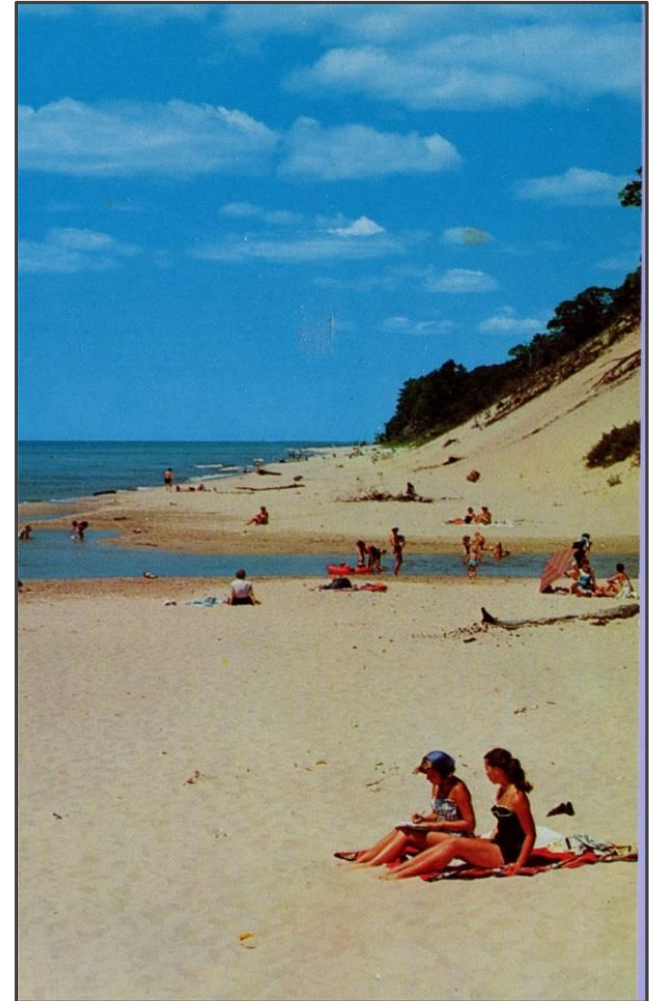
1954



1961



1964



1968



1968

**KNOWN FOR IT'S
CLEAR WATERS,
QUIET SETTING
AND AWARD
WINNING
SUNSETS, DUCK
LAKE IS ROUGHLY
270 ACRES IN SIZE,
TWO MILES LONG
AND ONE MILE
WIDE. THE LAKE
HAS 4.5 MILES OF
SHORELINE AND
AN AVERAGE
DEPTH OF NEARLY
25 FT. WITH SPOTS
THAT REACH 60 FT.**



1974



2014

DUCK LAKE MEMORIES THE EARLY YEARS

THE HISTORY OF DUCK LAKE SPANS NEARLY 200 YEARS AND IS RICH IN HEARTFELT SUCCESS STORIES OF HARD WORKING IMMIGRANTS FROM EUROPE THAT CAME TO THIS COUNTRY TO MAKE A BETTER LIFE FOR THEMSELVES AND THEIR FAMILIES. FRUITLAND TOWNSHIP WAS FORTUNATE TO HAVE MANY OF THESE FAMILIES MAKE THEIR MARK IN THE DUCK LAKE AREA.

THIS PRESENTATION FOCUSES ON SOME OF THE FIRST SETTLERS OF DUCK LAKE FROM THE LUMBERING AREA IN THE MID-LATE 1800'S THRU THE BOOM OF THE LAKE RESORTS IN THE FIRST PART OF THE 1900'S.

DUCK LAKE'S FIRST SETTLER

IN 1790, NOVA SCOTIAN JOSEPH LA FRAMBOISE, WESTERN MICHIGAN'S AGENT FOR THE JOHN JACOB ASTOR FUR COMPANY, WAS GIVEN A LAND GRANT BY ASTOR TO BUILD A LOG CABIN ON THE OLDEST HISTORICAL SPOT IN THE WHITE LAKE AREA — "JIBSHI SAGAGEN," OR DUCK LAKE AS WE KNOW IT TODAY.

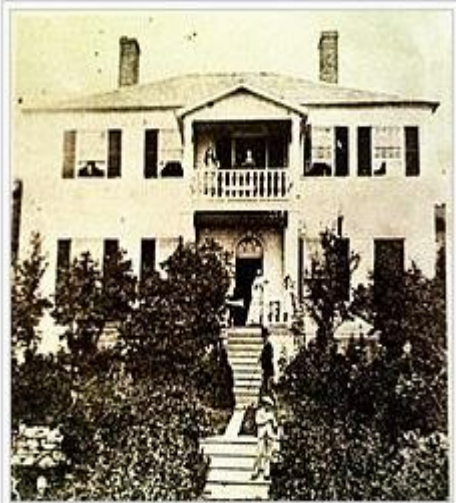


AS AGENT FOR ASTOR, THE CABIN WAS ONE OF A UNIT OF 20 TRADING STATIONS ESTABLISHED IN THE LATTER DAYS OF THE FAMOUS ASTOR REGIME. THESE TRADING POSTS WERE PART OF A "FUR CLAIM" STRETCHING ACROSS THE PINE COVERED SLOPES OF MICHIGAN FROM THE KALAMAZOO RIVER TO GRAND TRAVERSE BAY. THE LOG CABIN WAS 14 FT BY 16 FT, WITH A CHIMNEY MADE OF 4 LARGE UPRIGHT LOGS, INTERIOR WALLS COVERED WITH CLAY AND STRAW AND A NARROW PORCH FACING LAKE MICHIGAN. IN 1806 JOSEPH WAS KILLED BY AN INDIAN NEAR LOWELL MICHIGAN. HIS WIDOW, MADAME LA FRAMBOISE, WAS A VERY REMARKABLE WOMAN. SHE WAS THE CHILD OF FRENCH CANADIAN/OTTAWA INDIAN PARENTS AND EDUCATED BY THE FRENCH. SHE GREW UP WITH HER OTTAWA INDIAN MOTHER AT THE MOUTH OF THE GRAND RIVER IN GRAND HAVEN.

HER FUR TRADE SPANNED THE ENTIRE WEST COAST OF MICHIGAN AND IN 1818 SHE SOLD TO ASTOR'S AMERICAN FUR COMPANY FOR A REPORTED "SMALL FORTUNE" AND RETIRED ON MACKINAC ISLAND.

LA FRAMBOISE BECAME ACTIVE IN FOUNDING A SCHOOL ON MACKINAC ISLAND FOR NATIVE AMERICAN CHILDREN AND SUPPORTING CHARITABLE ACTIVITIES UNTIL HER DEATH IN 1846.

AS ONE OF THE MOST PROMINENT EARLY BUSINESSWOMEN OF MICHIGAN, SHE WAS ELECTED IN 1984 TO THE MICHIGAN WOMEN'S HALL OF FAME.

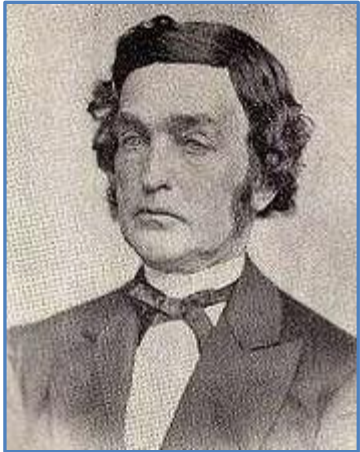


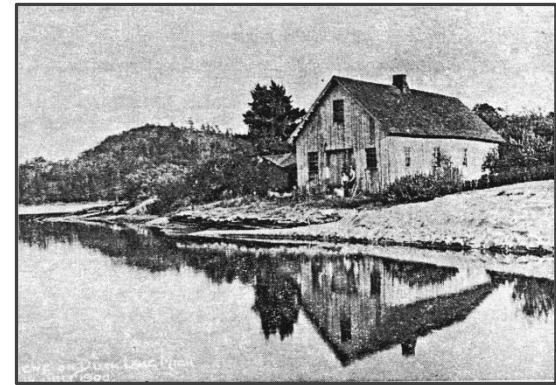
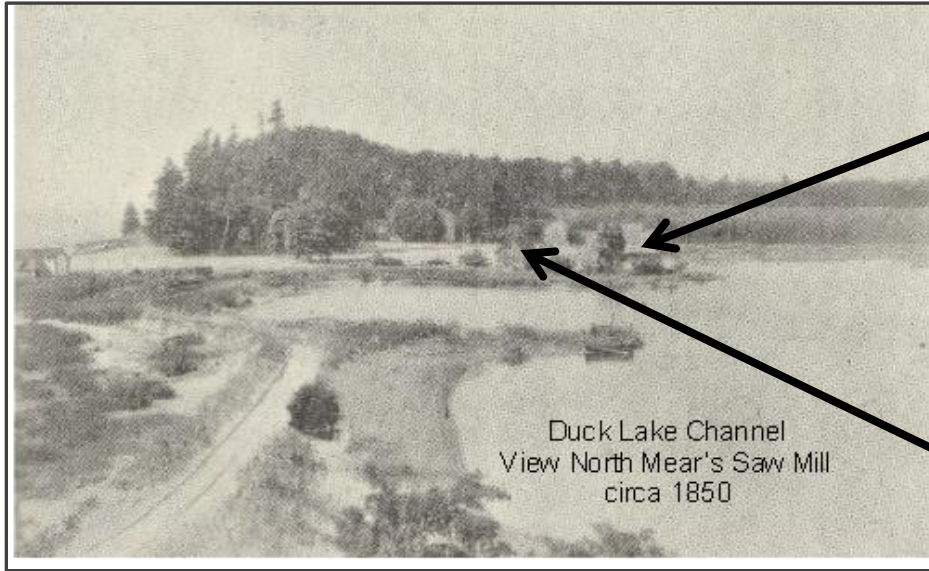
House of Madeline La Framboise, Mackinac Island

**SOURCES: WHITE LAKER, 100 YEAR ADDITION JAN 30, 1974,
WHITE LAKE OBSERVER JULY 12-1978,
HISTORY OF AMERICAN WOMEN JAN 2013, WIKIPEDIA**

CHARLES MEARS

IN 1844, CHARLES MEARS, A BUSINESS MAN FROM MASSACHUSETTS PURCHASED THE PROPERTY AT THE MOUTH OF DUCK LAKE. HE BUILT A DAM AT THE SITE OF THE CURRENT DUCK LAKE BRIDGE, A WATER POWERED SAW MILL, BOARDING HOUSE, STORE, BLACKSMITH SHOP AND STABLE. THE LUMBER CAMP WAS KNOWN AS "THE MIDDLE HOUSE". IN 1856 A THREE STORY BOARDING HOUSE WAS ERECTED AND THE SMALL HAMLET WAS OFTEN CALLED CORK POINT. THE SMALL HAMLET FOR A NUMBER OF YEARS WAS THE CENTER OF ACTIVITY FOR THE WHOLE SURROUNDING TERRITORY. THE DUCK LAKE STORE SUPPLIED THE NEEDS OF SETTLER AND INDIANS ALIKE. THE LOCAL OTTAWA POPULATION NUMBER AS MUCH AS 3000.





Sources: Charles Mears, Pioneer of the White Lake Area

FOR 25 YEARS CHARLES MEARS WAS THE RECOGNIZED LEADER AND BUSINESSMAN IN THE AREA. DURING THIS TIME HE PURCHASED OVER 40,000 ACRES OF PRIME TIMBER LANDS, MOST FROM THE U.S. GOVERNMENT LAND OFFICE FOR \$1.25/ACRE AND INCLUDED OVER 2000 ACRES SURROUNDING DUCK LAKE. HE CONSTRUCTED AND OPERATED 15 SAW MILLS AND BUILT FIVE HARBORS FOR THE TRANSPORT OF LUMBER. ONE OF THOSE HARBORS WAS THE PIER AT THE MOUTH OF DUCK LAKE ON LAKE MICHIGAN. IT WAS SERVICED WEEKLY BY THE SCHOONER HE BUILT; "PROPELLER", THAT REGULARLY TRANSPORTED LUMBER TO CHICAGO AND SUPPLIES BACK TO WEST MICHIGAN.

CHARLES MEARS LEGACY

MR. MEARS ALSO SERVED IN THE STATE SENATE AND WAS AN EARLY MEMBER OF A NEWLY FOUNDED POLITICAL PARTY, THE REPUBLICANS. HE WAS A PERSONAL FRIEND OF ABRAHAM LINCOLN. IN NOVEMBER OF 1858 THE TWO SAW MILLS WERE DESTROYED BY FIRE, REPORTEDLY BY A GROUP OF DRUNKEN DISGRUNTLED UNPAID LABORERS. WITH OVER 10,000 LOGS IN THE WATERS OF DUCK LAKE, A NEW STEAM SAW MILL WAS SHIPPED FROM CHICAGO AND READY FOR PRODUCTION IN LATE 1859. BY THE LATE 1800'S THE VAST FORESTS OF TOWERING WHITE PINE HAD BEEN COMPLETE STRIPPED FROM THE LOCAL LANDSCAPE AND THE LUMBER INDUSTRY HAD MOVED INLAND AND FARTHER NORTH. AIDED BY THE INTRODUCTION OF RAILROAD SERVICE IN THE STATE, THE BOOM TIMES OF CHARLES MEARS HAD MOVED ON.

FIRST NEWSPAPER HEADLINE DEC 23, 1859

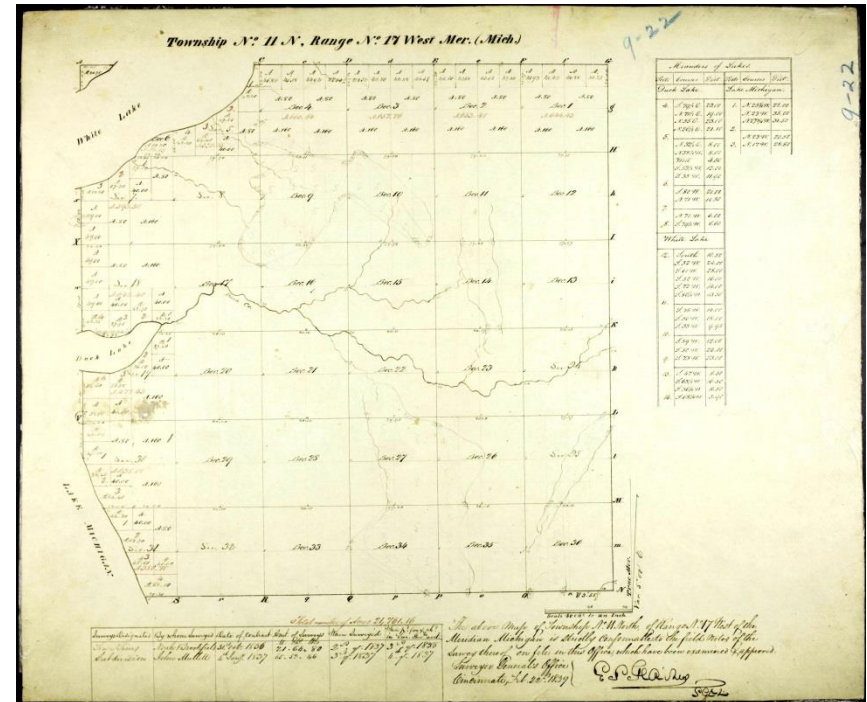


Editorial Cor. of the Allegan Journal.
Allegan, Muskegon and Traverse Bay State Road.
POST SAUBLE, Oct., 18.
We are progressing finely with the survey of the Allegan, Muskegon and Traverse Bay State Road. The survey will soon be completed to Traverse City.

While passing along our route, we have had occasion to visit the mouths of several of the streams emptying into Lake Michigan where we found several enterprising lumbering villages among others Duck Lake, White River, Pentwater, Pere Marquette and Little Sauble. Above this place are the settlements of Big Sauble, Free Soil and Manistee.

SECOND SURVEY 1859

....SEVERAL
ENTERPRISING
LUMBERING
VILLAGES HAVE
ESTABLISHED
INCLUDING
THE ONE AT THE
MOUTH
OF DUCK LAKE



FIRST MAPPED 1837

EDWARD H. TOWNSEND BECAME THE FIRST POSTMASTER OF THE VILLAGE OF DUCK LAKE WHICH WHEN DEVELOPED WAS IN OTTAWA COUNTY. MUSKEGON COUNTY WAS NOT ORGANIZED UNTIL 1859. THE POST OFFICE OPENED ON MARCH 24, 1856, AND WAS CLOSED JULY 24, 1858 AND THE VILLAGE FADED INTO A HAMLET. David Pequet Presentation 8-18-16

HENRICK SCHEIDER ...HENRY SNYDER

ONE OF DUCK LAKE'S PROMINENT FOUNDING FAMILIES FOLLOWING THE LUMBERING ERA WAS THAT OF HENRICK (HENRY) SCHNEIDER. BORN IN GERMANY IN 1837 HE FIRST SETTLED IN CHICAGO WORKING IN THE STOCK YARDS AND AT THE AGE OF 20 MOVED TO DUCK LAKE TO MAKE HIS FORTUNE AS A LUMBER JACK WORKING FOR MEARS. HE BUILT A LOG CABIN A FEW HUNDRED YARDS SOUTH OF DUCK LAKE AND IN 1870 TOOK TITLE, SIGNED BY PRESIDENT ULYSSES S. GRANT, TO 154 ACRES OF PROPERTY SOUTH OF DUCK LAKE CHANNEL AND ENCOMPASSING OVER ONE MILE OF LAKE MICHIGAN SHORELINE.



PLOT MAP
1877

HE BUILT A RESPECTABLE FARM THAT INCLUDED SEVERAL ACRES OF RASPBERRIES AND FRUIT TREES AND ALSO A ROOFING SHINGLE MILL. EACH SUMMER HIS PRODUCE ENDED UP IN CHICAGO MARKETS VIA GOODRICH BOAT CO. THAT DOCKED AT MICHILLINDA BEACH LODGE A HALF MILE NORTH OF DUCK LAKE.



*Some of the Berry Pickers at work and
5 crates in foreground. Picture taken last week.*

THE MUSKOGON CHRONICLE, FRIDAY, JUNE 23, 1922

HELP WANTED.

RASPBERRY PICKERS, about July 5.
Must be reliable. Six cents quart.
Duck Lake camp site, tent and bed
furnished. Henry Snyder, Route 2,
Whitehall.

SNYDER BOYS

CIRCA 1912

CORNER SCENIC & DUCK LAKE RD



6171 DUCK LAKE RD

F W BEERS 1877 MUSKEGON COUNTY ATLAS



INDIAN TRAIL
TO
WHITEHALL



FUTURE
DUCK LAKE ROAD

1920 U.S. CENSUS

SOUTH SIDE DUCK LAKE

STATE Michigan COUNTY Muskegon TOWNSHIP OR OTHER DIVISION OF COUNTY Fruitland Township

DEPARTMENT OF COMMERCE-BUREAU OF THE CENSUS

FOURTEENTH CENSUS OF THE UNITED STATES: 1920-POPULATION

SUPERVISOR'S DISTRICT No. 7 SHEET No. 6 B

NAME OF INCORPORATED PLACE Fruitland Township

ENumerated by ME ON THE 27 23rd DAY of January 1920. John H. Mitchell ENUMERATOR

WARD OF CITY 02 97

PLACE OF BIRTH	NATIVITY AND MOTHER TONGUE		OCCUPATION	
	Place of birth	Mother tongue	Place of birth	Mother tongue
191 184	Sweden	Swedish	Farmer	Swedish
192 184	Sweden	Swedish	Farmer	Swedish
193 184	Sweden	Swedish	Farmer	Swedish
194 184	Sweden	Swedish	Farmer	Swedish
195 184	Sweden	Swedish	Farmer	Swedish
196 184	Sweden	Swedish	Farmer	Swedish
197 184	Sweden	Swedish	Farmer	Swedish
198 184	Sweden	Swedish	Farmer	Swedish
199 184	Sweden	Swedish	Farmer	Swedish
200 184	Sweden	Swedish	Farmer	Swedish
201 184	Sweden	Swedish	Farmer	Swedish
202 184	Sweden	Swedish	Farmer	Swedish
203 184	Sweden	Swedish	Farmer	Swedish
204 184	Sweden	Swedish	Farmer	Swedish
205 184	Sweden	Swedish	Farmer	Swedish
206 184	Sweden	Swedish	Farmer	Swedish
207 184	Sweden	Swedish	Farmer	Swedish
208 184	Sweden	Swedish	Farmer	Swedish
209 184	Sweden	Swedish	Farmer	Swedish
210 184	Sweden	Swedish	Farmer	Swedish
211 184	Sweden	Swedish	Farmer	Swedish
212 184	Sweden	Swedish	Farmer	Swedish
213 184	Sweden	Swedish	Farmer	Swedish
214 184	Sweden	Swedish	Farmer	Swedish
215 184	Sweden	Swedish	Farmer	Swedish
216 184	Sweden	Swedish	Farmer	Swedish
217 184	Sweden	Swedish	Farmer	Swedish
218 184	Sweden	Swedish	Farmer	Swedish
219 184	Sweden	Swedish	Farmer	Swedish
220 184	Sweden	Swedish	Farmer	Swedish
221 184	Sweden	Swedish	Farmer	Swedish
222 184	Sweden	Swedish	Farmer	Swedish
223 184	Sweden	Swedish	Farmer	Swedish
224 184	Sweden	Swedish	Farmer	Swedish
225 184	Sweden	Swedish	Farmer	Swedish
226 184	Sweden	Swedish	Farmer	Swedish
227 184	Sweden	Swedish	Farmer	Swedish
228 184	Sweden	Swedish	Farmer	Swedish
229 184	Sweden	Swedish	Farmer	Swedish
230 184	Sweden	Swedish	Farmer	Swedish

RUDOLF RUBEN
SWEDEN

HENRY
WALTERS
GERMANY

CHRIST HINZE

LOUISE SNYDER

BUILD IT AND THEY WILL COME



**SCENIC DRIVE AT DUCK LAKE
CHANNEL 1927
UNDER CONSTRUCTION BY
THE MUSKEGON COUNTY ROAD
COMMISSION**



THE CHICAGO DAILY TRIBUNE: FRIDAY

RESORTS AND HOTELS | RESORTS AND HOTELS

MISCELLANEOUS. MISCELLANEOUS.

White Lake

MICHIGAN

A CHARMING sheet of water six miles long and three miles wide, at the head of which is the village of WHITE HALL. Abounding with bass, pickerel and trout, it is truly a fisherman's paradise. Opening into Lake Michigan, the Goodrich boats are enabled to touch many points along the lake.

The best place to SPEND YOUR VACATION is

HANOVER VILLA WHITE LAKE
Beautifully located; five minutes to lake; fine German cooking. ALL CONVENIENCES. Electric lights in every room. Bookies. CHAS. HUNTER. Whitehall, Michigan.

CAMP RUBEN
RIGHT ON THE LAKE. FINE BOATING, BATHING and FISHING. EXCELLENT TABLE. COFFEE. Rates—\$1.00 to \$10.00 per week. Write MRS. H. RUBEN, Route 3, Whitehall, Mich.

LAKESIDE INN
Near Whitehall dock, pretentiously situated adjacent to White Lake Yacht Club, everything modern and arranged in such manner as to make you feel at home. Rates—\$10 to \$12. G. D. MASON & CO., Prop., MICHELLENDIA P. O., MICHIGAN.

BUSKEWRERA CLUB INN
On Long Point, the most beautiful spot on that part of western shore; fine fishing, boating and bathing on the lake. Home grown vegetables and fruit; our own milk, butter, eggs and poultry. WILLIAM BRUCE, Montague, Michigan.

SYLVAN BEACH HOTEL
Between WHITE LAKE & LAKE MICHIGAN. OPENED JUNE 1st. WRITE FOR BROCHURE. R. J. WIELZAN, WARRENINGO, P. O., MICH.

DUCK LAKE RESORT
Beautifully located on a half acre of land on Duck Lake and Lake Michigan. Excellent Fishing, Boating and Hunting. Home cooking. Tables, \$2.00 to \$10.00. Send for Circular. CHESTY HEDEN, Whitehall, Michigan.

MURRAY'S INN
Pretentiously situated near Government wharf on SYLVAN Beach, between White Lake and Lake Michigan. Modern equipped in all respects. Inviting room and excellent table. Brochure sent upon request. Wm. Murray, Prop., Whitehall P. O., Mich.

HOTEL MEARS
Fine brick building, with all sanitary and modern improvements; shady veranda. Tables equipped with best of market afford. Nothing left undone that will contribute to your comfort and pleasure. Rates \$10 to \$12. ALEX. GILSONKNEK, Whitehall, Michigan.

IDLEWILD RESORT
Famous for its good cooking; private home & cottages; electric lights in all rooms; cottages used for sleeping only; meals served at home. Book in left, fine building, grand view of lake. FRANK S. SCHMIDT, Box 50, Whitehall, Mich.

"GOODRICH WAY" to WHITE LAKE RESORTS

Leave Chicago Tues., Friday and Sat., 8:00 p.m.
Leave White Lake Sunday, Mon., Wed., 6:00 p.m.

WHITE LAKE DOCKS—Sylvan Beach, Michellinda, Narveys and Whitehall
CHICAGO DOCKS—Foot Michigan Avenue. Port and Bridge for Boat Traffic

GOODRICH STEAMSHIP LINES

CHICAGO TRIBUNE JUNE 1917

1 WEEK ROOM & BOARD
\$8-10
ROUND TRIP STEAMER
CHICAGO - WHITE LAKE
10 HOUR TRIP
INCLUDING BUNK
\$7.00

Daily
—the
Goodrich
way
to Michigan

Spent a day or a week-end at one of the beautiful summer resorts of western Michigan—easily reached.

S. S. Alabama, S. S. Arizona and S. S. Indiana to
Grand Haven, Muskegon, Grand Rapids Rail and Bus Connections to All Points
Boat Leaves Chicago Daily 7:45 P. M.
White Lake Point. Special Boat Friday, June 16, 7:45 P. M.
All schedules Daylight Saving Time.

	One Way	Round Trip		One Way	Round Trip
Grand Haven	\$3.50	\$6.50	Grand Rapids	\$3.95	\$7.30
Muskegon	\$3.75	\$6.50	White Lake	\$4.00	\$7.00

(Trunk fees and to Docks for Grand Rapids)

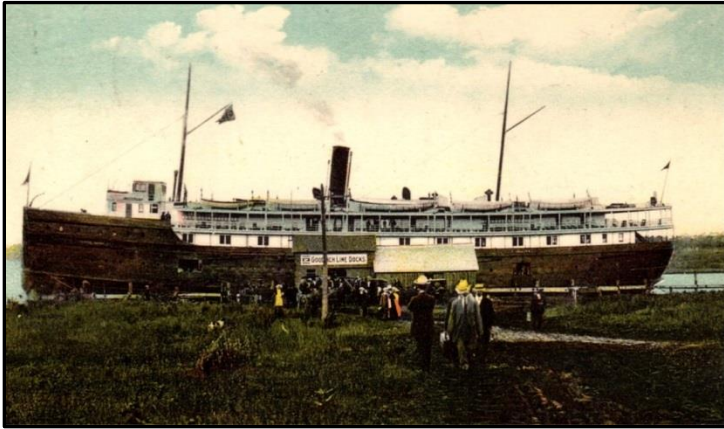
Automobile Shipping Rates between Chicago and Michigan are very low. Write for Vacation Guides to Michigan, and Wisconsin summer resorts. For berth reservations, tickets or general information, call on or address:

Park Robbins, Passenger Traffic Mgr.
Goodrich Transit Company
City Ticket Office, 104 S. Clark St., Chicago
Decks, Michigan Blvd. Link Bridge and River

GOODRICH STEAMSHIP LINES

MICHILLINDA LANDING

LAKESIDE
INN



CITY DOCK WHITEHALL



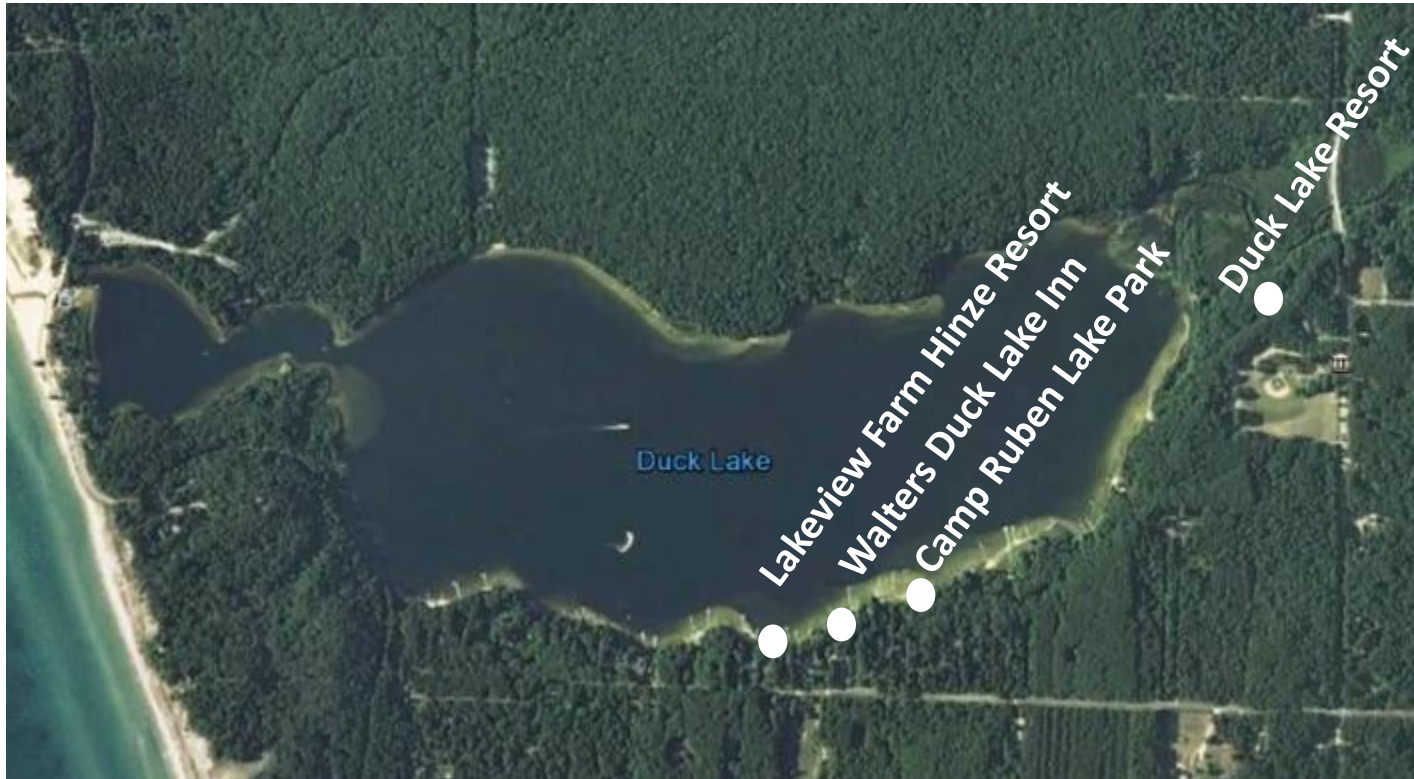
FERRIES FROM CITY DOCK



LAKESIDE INN

David Pequet
Presentation
8-18-16

DUCK LAKE RESORTS



1900 - 1935

LAKE VIEW FARM

THE *LAKE VIEW FARM* RESORT WAS VERY TYPICAL. THE PROPRIETOR, CHRIST HINZE, IMMIGRATED FROM GERMANY IN THE LATE 1800'S AND BOUGHT PROPERTY ON DUCK LAKE IN 1898. HE AND HIS FAMILY CLEARED THE LAND, ESTABLISHED A BERRY FARM AND STARTED TAKING SUMMER VACATIONERS FROM CHICAGO. BY 1920 HE HAD EXPANDED HIS FARM HOUSE TO 14 BEDROOMS AND A DINING HALL THAT COULD SEAT 125 GUESTS. HE HAD A MODEL T FORD THAT WOULD PICK UP GUESTS AT THE GOODRICH BOAT DOCK IN WHITEHALL. THE RESORT OPERATED UNTIL 1936 WHEN THE ADVENT OF THE AUTOMOBILE DETRACTED FROM DESTINATION VACATION SPOTS POPULAR THE FIRST PART OF THE CENTURY.



VIEW NORTH



5780 DUCK LAKE RD

David Pequet Presentation 8-18-16

LAKEVIEW FARM HINZE RESORT



MUSKRAT LAKE

VIEW SOUTH ACROSS DUCK LAKE RD

LAKEVIEW FARM HINZE RESORT



HINZE FAMILY 1919



HINZE COTTAGE 1916



HINZE COTTAGE 1923

David Pequet Presentation 8-18-16

DUCK LAKE INN... WALTERS PLACE



STREET VIEW



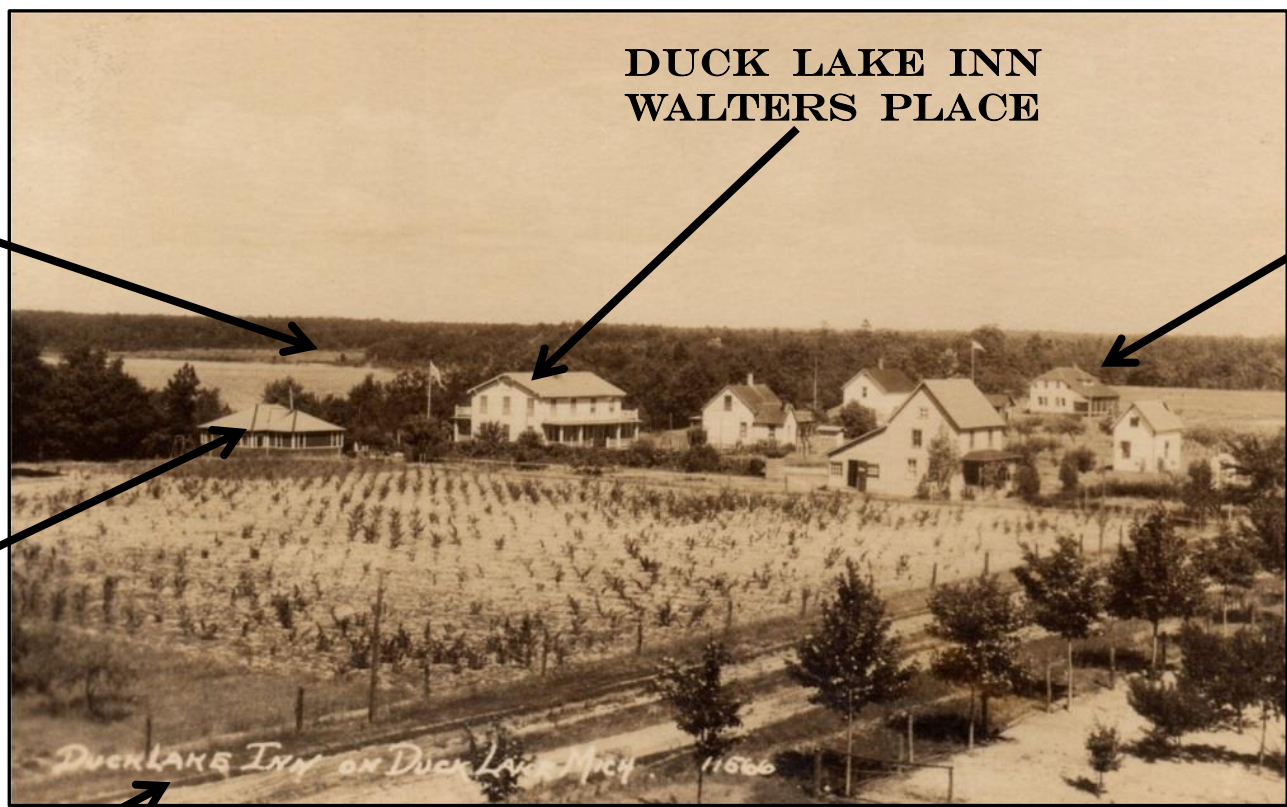
LAKE VIEW



5738 DUCK LAKE RD

THE *DUCK LAKE INN* WAS OPERATED BY HARRY WALTERS AND HIS WIFE WHO ALSO CAME FROM GERMANY. THEY PURCHASED PROPERTY ADJACENT TO THE HINZE RESORT. BY 1920 THE RESORT INCLUDED THE MAIN TWO STORY HOUSE, GUEST COTTAGE, KITCHEN AND DINING BUILDING, ICE HOUSE AND A DANCE AND POOL HALL ON THE LAKE. MANY SATURDAYS DURING PROHIBITION THE DANCE HALL HAD OVER A 100 VACATIONERS FROM MILES AROUND ENJOYING THEIR SUMMER VACATIONS. THE INN OPERATED UNTIL HELEN WALTER DIED IN 1955.

VIEW NORTH EAST FROM LAKEVIEW FARM BARN LOFT



DUCK LAKE INN
WALTERS PLACE

LAKE PARK
CAMP RUBEN

DUCK CREEK

WALTERS
DANCE HALL

DUCK LAKE ROAD
DIRT TWO TRACK

1925

WALTERS DANCE HALL

1919



1921

David Pequet Presentation 8-18-16

WALTERS DANCE HALL 1925

HOW TO REACH DUCK LAKE INN

By Train, Boat or Auto

Pere Marquette Railroad

Three trains daily to Whitehall.

Goodrich Boat

Direct to White Lake or by way of Muskegon. Boat leaving Chicago in the evening, arrives at destination early the following morning. Day boat leaving early in the morning arrives on White Lake about 6:00 p. m.

A very interesting Twelve Hour Auto Trip from either Chicago or Detroit. Leaving Muskegon on M-11 follow the Red Arrows.

Our Autos Will Meet Parties

At Sylvan Beach 50c a person
At Whitehall \$1.00 a person
At Muskegon \$1.50 a person

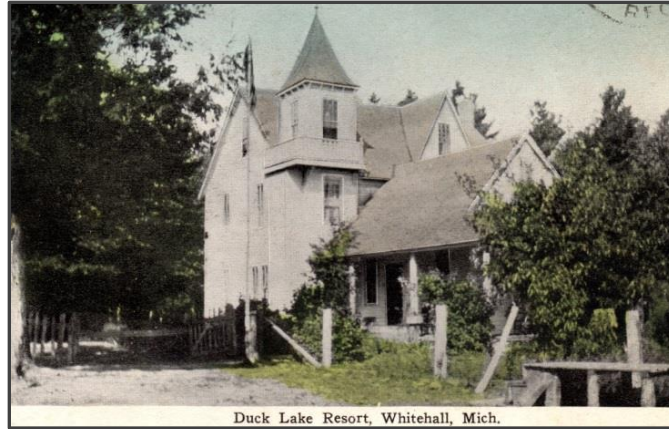
For further information address—

HARRY F. WALTERS, Prop.
DUCK LAKE INN

Telephone 136-G WHITEHALL, MICHIGAN



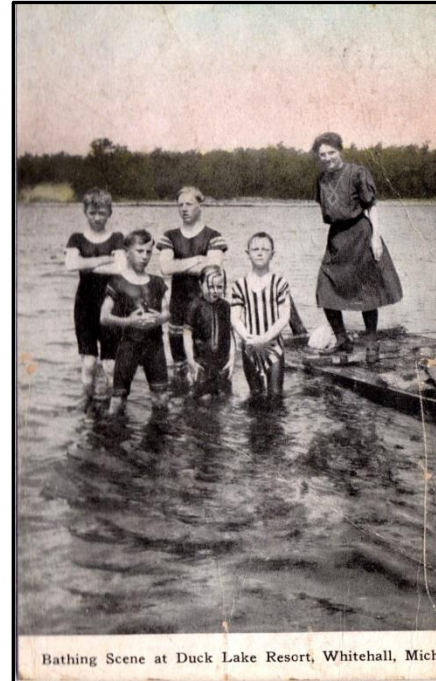
DUCK LAKE RESORT



Duck Lake Resort, Whitehall, Mich.

THE DUCK LAKE RESORT WAS STARTED BY ANOTHER FIRST GENERATION GERMAN FAMILY LED BY CHRIST HESSE. THE FAMILY HAD BEEN STONE MASONS IN GERMANY DATING BACK TO THE 1600'S. CHRIST AND HIS BROTHER FRED HAD WORKED IN CHICAGO BUILDING COBBLESTONE STREETS. IN 1893 THEY HAD SAVED ENOUGH MONEY TO BUY PROPERTY ON THE EAST END OF DUCK LAKE. THEY CLEARED THE LAND AND BUILT A 3 STORY HOME FOR THEIR FAMILY AND SUMMER GUESTS AND BEGAN ADVERTISING THEIR SUMMER RESORT IN THE 1902 CHICAGO TRIBUNE. THE RESORT WAS KNOWN FOR ENTERTAINING IT'S SUMMER GUESTS WITH SEVERAL SHAKESPEAREAN PLAYS PUT ON BY LOCAL ACTORS OVER THE SUMMER SEASON. CHRIST HESSE WAS RESPONSIBLE FOR BUILDING THE FIRST BRIDGE OVER DUCK CREEK RESULTING IN A DIRECT ROUTE TO WHITE LAKE AND WHITEHALL. HE LATER GIFTED THE BRIDGE AND ACCESS PROPERTY TO THE TOWNSHIP AND IT IS NOW NESTROM ROAD.

DUCK LAKE RESORT



Bathing Scene at Duck Lake Resort, Whitehall, Mich.

DUCK LAKE RESORT
Formerly Hesse's — Open for Business
20 Room Hotel—3 Small Cottages and 2 Large Ones.
FISH and CHICKEN DINNER A SPECIALTY
MENU FOR JULY 4th AND 5th
Soup, Chicken Broth with Rice, Radishes, Green Onions,
Fresh Lake Fish, Roast Chicken with Dressing,
Mashed Potatoes, Green Shelled Peas,
Salads, Lettuce, Asparagus, Strawberry Shortcake,
Cherry Pie, Tea, Coffee, Milk.

HOW TO GET THERE

Edith J. Brown, Manager
M. B. Snow, Chef.
Formerly of Brebner's Cafe
Information Phone 3037
There is no Cooler Spot in Michigan or More Ideal.

THE MAIN HOUSE HAD
20 BEDROOMS AND
SEVEN SMALL
COTTAGES WERE ALSO
PART OF THE RESORT.
THE HESSES RAN THE
RESORT UNTIL 1916. IT
REOPENED IN 1920 AND
IT WAS LEASED TO THE
YMCA MUCH OF THE
NEXT DECADE



CHRIST HESSE



David Pequet Presentation 8-18-16

DUCK LAKE RESORT ACTING TROOP

CIRCA
1910



DUCK LAKE RESORT

ACTORS PARTY

DUCK LAKE CHANNEL



CIRCA 1910

CHRIST & AUGUSTA HESSE

urday, March 19, 1949

C. J. Hesse, 85, Former Resort Operator, Dies

Montague, March 19 — (Special) — Christ J. Hesse, 85 years old, builder of the original three-story Duck lake resort hotel, died at his home on Duck lake, this morning.

In October, 1893, Mr. Hesse purchased land on Duck lake and moved there with his family, clearing a site for their home. He built a private road across Duck creek, still known as the Hesse road, and later presented it to the township.

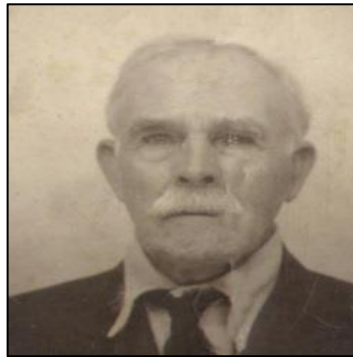
After selling the resort, which he operated for many years, Mr. Hesse served as caretaker of Camp Shawondasse, the Grand Rapids Boy Scout council camp.

Born in Yestaedt, Germany, June 1, 1863, he came to the United States at the age of 23 years, making his home in Chicago for seven years. He was married to Augusta Nolte, Nov. 17, 1888. They celebrated their 60th wedding anniversary, last fall.

Mr. Hesse leaves his widow; a son, Herbert of Duck lake; two daughters, Mrs. William Snyder of Muskegon, and Mrs. Henry Putnam of Muskegon Heights; 13 grandchildren; and five great-grandchildren.

Funeral services will be Monday at 2 p. m. in the Gee chapel with burial at Oakhurst cemetery.

1949



60 THE MUSKEGON CHRONICLE, Thursday, December 8, 1955

Helped Husband Clear Land Early Duck Lake Resort Operator, Mrs. Hesse, Dies

Mrs. Auguste Nolte Hesse of Duck Lake, who with her husband, Christ J. Hesse, formerly operated the popular Duck Lake Resort, died yesterday in Muskegon Convalescent Hospital.

Mr. and Mrs. Hesse, who observed their 50th wedding anniversary in 1938, were two of the earliest settlers in Duck Lake, where they cleared their home site on arrival in 1893. Mr. Hesse later built the Duck Lake Resort, which the couple operated until 1915. During their ownership at the Resort, Mr. Hesse built a road to Duck Creek, which later was presented to the township.

1866

MRS. HESSE, who was 89 years old, was born Oct. 10, 1866, in Goettingen, Germany, and was educated in that country. She came to the United States in 1887 and settled in Chicago, where she married Mr. Hesse Nov. 17, 1888. Mr. Hesse died in 1949 at Duck Lake.

Mrs. Hesse was a member of the Methodist Church of Montague. She leaves one son, Herbert J. Hesse of Duck Lake, and two daughters, Mrs. Lydia Snyder of Muskegon and Mrs. Frieda C. Putnam of Muskegon Heights; 13 grandchildren, and 13 great-grandchildren.

hurst

SERVICES will be conducted Saturday at 2 p. m. from the Gee Chapel, Whitehall, with Rev. Arthur W. Sandberg, DD, pastor of Central Methodist Church, officiating. Burial will be at Oakridge at Whitehall.



MRS. HESSE

1955

PASSING OF EARLY SETTLERS OF DUCK LAKE

RUBENS' LAKE PARK RESORT

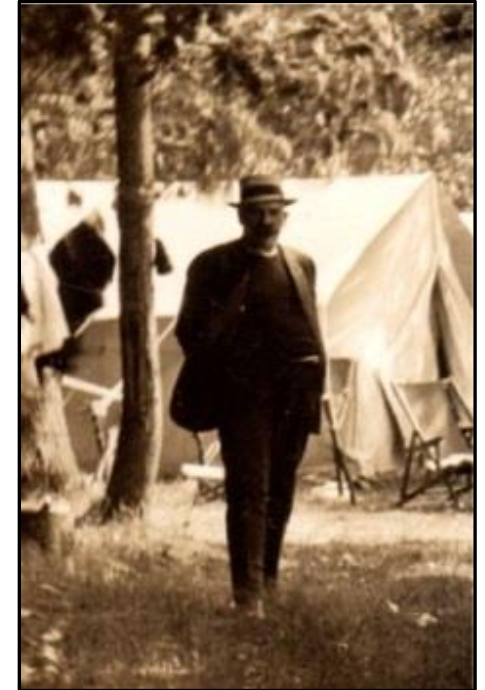


5666 DUCK LAKE RD

IN 1914 RUDOLF RUBEN AND HIS BROTHER KARIN, SWEDISH IMMIGRANTS, PURCHASED FOUR ACRES ON DUCK LAKE FOR \$600. THEY BUILT A TWO STORY HOME AND BEGAN ADVERTISING IN THE CHICAGO DAILY TRIBUNE FOR SUMMER VACATIONERS. "BATHING, BOATING AND FISHING \$8/WEEK". OVER TIME THE RUBENS EXPANDED THE RESORT AND ADDED SEVEN SMALL COTTAGES AND A DINING HALL. THE RESORT OPERATED UNTIL 1937.

CAMP RUBEN

1914 TENT CITY ON LAKE FRONT



CAMP KITCHEN

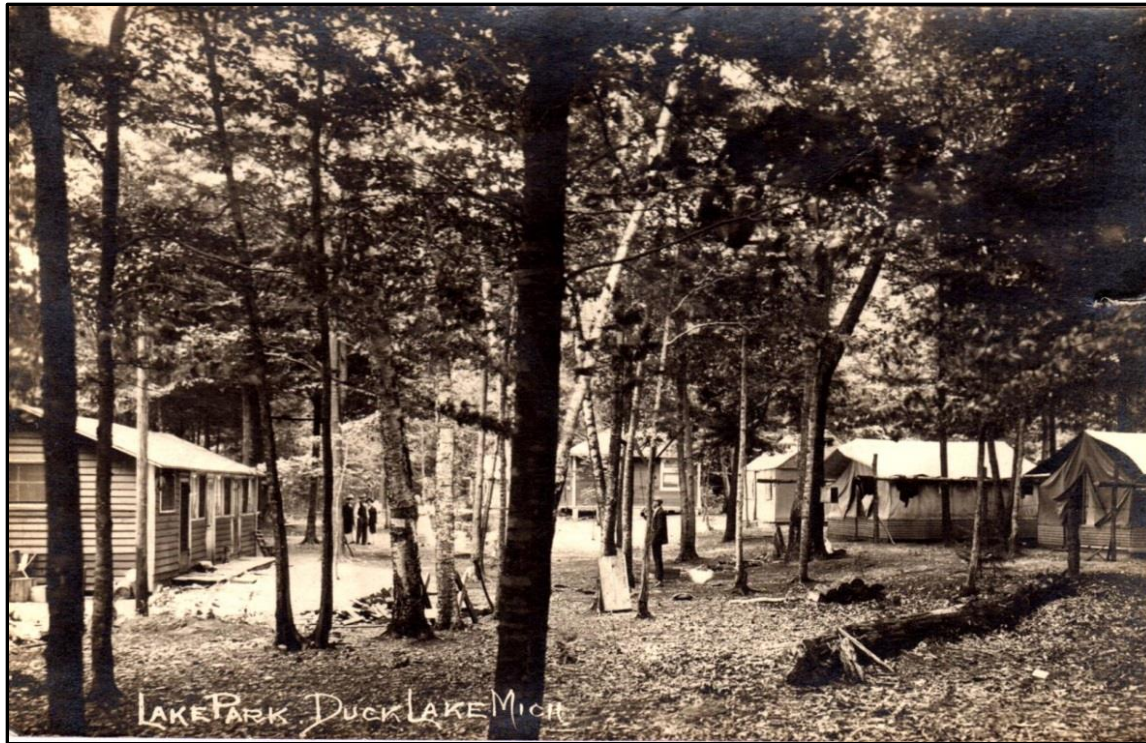
LAKE PARK 1917

SEVEN SMALL FRAME COTTAGES



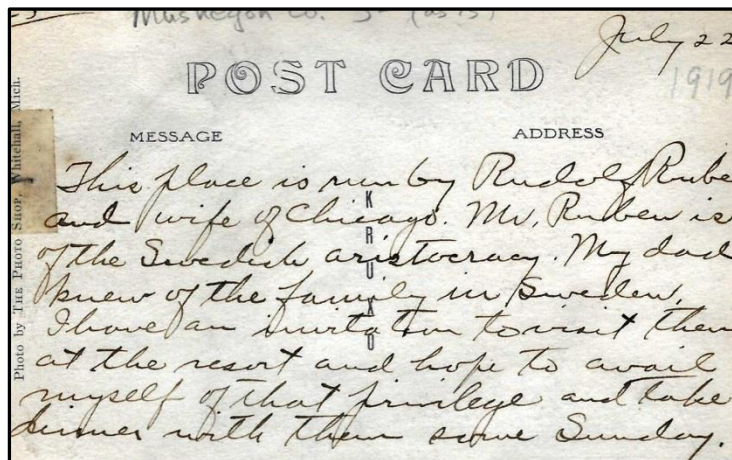
2016

LAKE PARK 1919



JULY 22, 1919

THIS PLACE IS RUN BY RUDOLF RUBEN AND HIS WIFE OF CHICAGO. MR. RUBEN IS OF THE SWEDISH ARISTOCRACY. MY DAD KNEW OF THE FAMILY IN SWEDEN. I HAVE AN INVITE TO VISIT THEM AT THE RESORT AND HOPE TO AVAIL MYSELF OF THAT PRIVILEGE AND TAKE DINNER WITH THEM SOME SUNDAY



LAKE PARK

1917



2016



NEVER A DULL MOMENT
A CLOSING FOOTNOTE

**OVER THE LAST 40 YEARS, DUCK
LAKE HAS NOT BEEN WITHOUT ITS
SHARE OF CONTROVERSY AND
CONCERN, GENERALLY SURROUNDING
DEVELOPMENT AND CHANGE .
INTERESTING TO NOTE THAT THIS IS
NOT A NEW PHENOMENA....**

Muskegon Daily Chronicle

SQUIRES
NEWS DEPOT
19 Jefferson St.

VOL. XXI. NO. 257.

MUSKEGON, MICH., SATURDAY EVENING, MARCH 23, 1901.

PRICE TWO CENTS.

WHAT'S IN A NAME?

What E. Sprigg Says of the Proposed to Change Duck Lake to Michillinda.

Ebenezer Sprigg, of Fernwood Resort, has prepared the following protest against the proposition to change the name of Duck Lake to Michillinda:

"An attempt is being made, through the Hon. J. J. Gee, to present a bill to the legislature to change the name of Duck Lake to that of Michillinda. Said lake is needless to describe for its beauty and old time scenes and incidents. It is a veritable land mark and once the most popular lumber manufacturing concern within 50 miles, Muskegon being in its infancy and Whitehall or Montague not even platted.

"The mill plant consisted of steam and water power. Machinery consisted of upright or muley saw five foot and two foot circular machines, lath mill, shingle machine and machinist's lath. Large warehouse or dock for holding supplies. Boarding houses, Messrs' cheap cash store, where almost anything could be supplied for cash or trade. Many farmers within a radius of 50 miles came to trade. Also a resting and lodging place for the weary beach travellers consisting of circuit judges of the court, lawyers, land surveyors and land hunters.

"It also includes a beautiful cemetery where the remains of individuals are peacefully resting, from home and foreign lands. Marriages and death certificates date the events as occurred at Duck Lake not Michillinda. All old settlers revere the name and many pleasant parties every year hold their picnics on its shores.

"It is almost needless to say it was founded and named by Charles Mears, of Chicago, somewhere about the year 1838. The writer, E. Sprigg, came in 1856, and holds his marriage certificate and baptismal register of two children born at Duck Lake; also many others, among whom is John McNeil, who is well known." In conclusion I, with many others, protest against the change."

DAILY CHRONICLE.

TUESDAY, APRIL 9, 1901.

MICHILLINDA LAKE.

More About That Proposition to Change the Name of Duck Lake.

John R. Austin, of Michillinda, was in the city today for a few hours. He is one of those interested in having the name of "Duck Lake" in Fruitland township changed to "Michillinda," as is proposed by the bill introduced some time ago in the legislature. He reports that things in his section of the county are booming along nicely and with prospects of a larger business than ever with the summer resorts.

"We are surprised—and we are very grateful—that so many Muskegon people are so deeply interested over the question of changing the name of Duck Lake to Michillinda," said Mr. Austin to THE CHRONICLE.

"The name of Duck Lake has already been changed and will hereafter be known as Michillinda, for that is how nearly all the people designate it now. It will be so called in spite of all the opposition may do to prevent it. People, for more than one reason, have taken a liking to the name Michillinda and that is how they insist on designating it, and whether the legislature changes it now or not, usage will fix it.

"In the report showing what some Muskegon city people had said in signing the petition recently circulated here against the change of name I find that Frank Alberts, W. H. Barney, Mr. Townner and others signed a statement to let it remain as it is. Notwithstanding this command we think it has slept long enough; even Rip Van Winkel awoke once in 20 years; we object to posing as a cenotaph.

"In the report Justice J. E. Sullivan is reported to have signed in the petition that he couldn't see any good reason why the name of Duck Lake should be stricken from the map of this county or state. I would say to Mr. Sullivan on this that we think if a few of the Duck Lakes were stricken from the map of the county the rest would stand a better show—ducks are not so plenty as they were.

"Then there is the statement of W. E. Osmun that the 'permanent residents in the vicinity of Duck Lake, should be considered and the name cherished by them allowed to remain.' Yes, Mr. Osmun, we think the old resident owners of the land bordering the lake should be considered; we all signed the petition for the change.

"Joe Sauter in the petition is said to have found fault with Michillinda as a market. In reply I will simply say, Joe, you will have to get up earlier in the morning, you see there were ten or a dozen wagons ahead of you—I was there myself—and—well, Michillinda is not Chicago, if farmers do come ten or twelve miles to sell their fruit and vegetables there. Some mornings the woods are full of wagons waiting for the people to get up. Of course it is not a good market. That is why so many teams come there.

"Capt. Lyssagt, of the life saving crew, claimed in signing the petition, that a change might confuse and mislead his patrol and hamper the work of the crew in time of action. We would not mislead or confuse the patrol for anything—possibly they do not know where Michillinda is—but don't you think, captain, they would learn in time."

Mr. Austin spoke regarding the statement of John Torrent, in the petition, who was opposed to the change for the reason that "there is no other lake in this county of that name, and it is laid down on all state and county maps," and said in reply: "John Torrent has not lived in Muskegon county long enough to be thoroughly acquainted. We are not talking about Duck Lake in Oscar Creek township, that you were evidently thinking of, or any of those ponds in Blue Lake township, or any of the numerous duck ponds in the county other than this one. It's the Duck Lake, Fruitland township, Muskegon county, Mich., that is to be hereafter known as Michillinda Lake."

"But now we are up to it," concluded Mr. Austin. "Mr. Gee, our representative, says the whole project is dead, dead days ago. That calls to mind ex-Senator Legalle's remark when Mary Elizabeth Lease was making it warm for him politically in Kansas some years ago: 'Only Indians and women scalp the dead.' Now we are puzzled to know where to place Messrs. Alberts, Torrent, Townner, et al.—Indians or women.

"Now, please wipe the blood off the moon; let her shine. I think even moonshine would reveal the true intent of the opposition."

NAME CHANGE

????

IN FALL OF 1900 THE

HON. J. J. GEE

INTRODUCED A BILL IN

LANSING TO CHANGE

THE NAME OF DUCK

LAKE TO MICHILLINDA

LAKE. RESIDENTS OF

MICHILLINDA FELT THE

NEW NAME WOULD

BETTER DESCRIBE THE

DEVELOPING FARM

PRODUCE BUSINESS OF

THE TIME. WIDE

SPREAD OPPOSITION

TO THE NAME CHANGE

PREVAILED.

MacKlean Publicity Office

THE MUSKEGON CHRONICLE

O. 77.

MUSKEGON, MICHIGAN, WEDNESDAY, AUG. 20, 1913.

AUGUST 1913 ANOTHER NEAR MISS... MUSKEGON COUNTY COMMISSIONERS AND RESORT PROMOTERS UNSUCCESSFULLY PUSHED FOR A DAM ACROSS DUCK LAKE CHANNEL AND A RAILROAD FROM NORTH MUSKEGON TO LUDINGTON

TO ASK COUNTY GIVE CROSSING OVER DUCK LAKE

Interurban Promoters Want
Supervisors to Dam Body
of Water

FOR RESORT DEVELOPMENT

Sidney M. Well Points Out
That Advantage in Expen-
diture of Money

That the county combine with the promoters of the Muskegon to Manistee railway to dam Duck Lake at its mouth and construct across the dam a big public thoroughfare and interurban right of way, thus giving the interurban a crossing over the lake, is the project which will be broached at the board of supervisors' meeting in October, according to Sidney O. Well, who was in Muskegon for a short time today.

The advantages to the county in doing this, Mr. Well declares, would be an immense development in the resort possibilities of Duck Lake.

Difficulties Prove Some.
"We are meeting the same difficulty at Duck Lake that we experienced at Hamlin lake, in Mason county," Mr. Well said this morning. "Getting across Duck Lake is one of the engineering difficulties of the road. We believe it would be a good thing for the county to dam the lake at its mouth, thus increasing the depth of water considerably and greatly developing the lake as a summer resort. By having a big resort here, all of the Lake Michigan shore from Muskegon north to Whitehall would rapidly be developed and the wealth of the county greatly increased."

Two surveys for the line between
(Continued on Page Seven.)

TO ASK COUNTY GIVE CROSSING OVER DUCK LAKE

(Continued from Page One.)

Muskegon and Ludington have been completed. One, leaving Whitehall, follows the lake shore fairly closely and enters North Muskegon through Interlake Park, crossing the channel at the mouth of Bear Lake. Another route is much farther inland, about a mile or two west of the Whitehall road, and goes through a country containing considerable clay. Mr. Well declared that no definite choice of a route had been made as yet, although the demand for a dam at the mouth of Duck Lake indicates that the latter is the preferred route. The more inland route does not touch Duck Lake.

Various Routes Considered.

Various routes through North Muskegon have also been considered, but Mr. Well declared himself unable to state this morning which route was preferred.

Work is now begun in surveying the route between Ludington and Manistee, and a crew of men is now in the woods of Mason county doing this work, Mr. Well declared. Manistee has thus far raised \$27,500 of its required bonus for the road, he declared, most of the subscriptions running from \$1,000 to \$5,000. "We haven't made a campaign among the smaller merchants like we did in Muskegon," he declared. "We have gone mostly to the principal moneyed men of the town."

W. W. Powell, publicity agent for the road, is in Whitehall today organizing a land owners' association to boost the value of resort lands along Lake Michigan between Muskegon and Whitehall, and to make an active campaign for the development of these lands so that they may be rapidly settled.

Mr. Well declared that work on the railroad would be begun as soon as the survey is completed and a choice of route made. "We hope to build a line between Ludington and Pentwater and between Muskegon and Whitehall this year yet," he asserted.



ABOUT THE AUTHOR....

Dave Pequet was born in Grand Rapids in 1952 and graduated from MSU. His first time on Duck Lake was as a Boy Scout in 1963. He was on the staff of Camp Shawondossee the last year the camp was open in 1968 and was a summer caretaker of the property thru 1974. After college, Pequet was commissioned as an officer in the U.S. Navy Aviation Program. Following the Navy he entered Wall Street and has owned a registered investment advisory firm in Chicago for 30 plus years. Dave, and his wife Chris of forty years, purchased property on Duck Lake in 1985. Pequet has been on the Board of Directors for the Duck Lake Riparian Owners Association for 14 years and is it's current President.

Acknowledgments:

Material was used for this presentation is from several publications including but not limited to: The Muskegon Chronicle, The Grand Rapids Press, The Chicago Tribune, White Lake Yacht News, 1952, The History of Fruitland Township, Meikle, 1976, Whitelake Beacon, 6-9-2008 Tanya Cabala, Dan Yakes, Charles Mears White Lake Pioneer, White Lake Historical District Guide 1976, The Grand Rapids Public Library, Montague Observer, Sue and Frank Bednarek and the estate of Norm Ullman. All of the cards/photos in this presentation are from the personal post card collection of David Pequet. A special thanks to Teri Hample and Nate Hesse who have shared an enormous amount of historic material from their extended families of Snyder and Hesse.